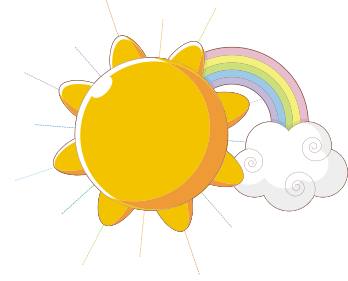




## What to bring to Summer Camp!



- 2 sheets and a light blanket OR sleeping bag/bedroll
- Pillow and pillowcase
- Towels & wash cloths
- Personal Toiletries (toothbrush, toothpaste, soap, shampoo, etc.)
- Comfortable, modest clothing (Tank tops, halter tops and/or tops which do not cover midriff are not allowed. Sheer, see-through clothing is also not acceptable.)
- Swim Suit (Girls, 1 piece suits only, please)
- Swim Suit cover up (T-Shirt, Cover up or towel must be worn over your suit while you are going between cabins & pool area.)
- Bible
- Notebook & pen
- Flashlight
- Spending Money (\$10 for concessions/canteen cards, additional money if you wish to purchase Camp Bethany t-shirts or other novelties)
- Bring your smiles and laughter, too!

Parents, please label your child's belongings with name, phone number and/or group. Our staff will notify you of any items left behind, but *you are responsible* for picking items left behind up from the camp.